



KENWOOD Remote

Application

JVCKENWOOD Corporation

KENWOOD Remote Application

User Guide



Caution:

**Do not operate any function that takes
your attention away from safe driving.**

CONTENTS

GETTING STARTED	1	Source List Panel	
Installing KENWOOD Remote App		Receiver Settings	8
Preparing the Music Player		Entering Car Receiver Settings	
MEDIA PLAYER	1	OTHER PREFERENCE SETTING	1
Media Player Screen		Preference Setting	
Category Selection Screens			
Current List Screen			
Making a Playlist			
APP LAUNCHER	3		
Adding Apps and Navigation			
CONNECTING THE REMOTE APPLICATION TO THE RECEIVER	3		
Android Connectivity			
iOS Connectivity			
iOS App Operation			
SOURCE CONTROL INTERFACE	5		
Choosing Source Control Modes			
DRIVER MODE OPERATION	6		
Source Name Screen			
Status Indicator			
Media Information Panel			
Play Time Panel			
Gesture Control			
Gesture Commands in Operation			
PASSENGER MODE OPERATION	8		
Passenger Mode Source Control Screen			
Remote Control Button Panel			

GETTING STARTED

KENWOOD Remote App requires the following for proper operation:

- Android: Minimum OS 4.4, Recommended OS 5.0 and above
- iOS: Minimum OS 8.0, recommended OS 9.3 and above
- Bluetooth support.

The system requirement information as mentioned above is not a guarantee that the application will work on all Bluetooth® compatible devices.

Installing KENWOOD Remote App

KENWOOD Remote App is a free application, available in the Google Play Store and Apple App Store. This app enhances the user experience of compatible KENWOOD car receivers. Search for “KENWOOD Remote” in the Store to locate and download the KENWOOD Remote App into your device.

Preparing the Music Player

Copy music files into the internal storage or the SD card of your device.

Note

If music files are stored in the SD card, do not remove or dismount the SD card while playing songs.

Supported audio files*

- MP3 (.mp3)
- AAC-LC/TLP (.m4a, .aac)
- PCM/WAVE (.wav)
- Ogg Vorbis (.ogg)
- AMR-NB (.3gp)
- AMR-WB (.3gp)

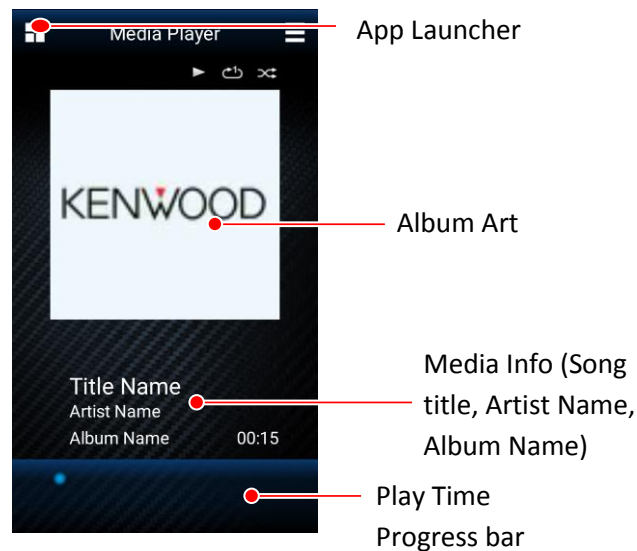
**Depends on your smartphone*

MEDIA PLAYER

Media Player Mode playback songs saved in the device.

Media Player Screen

1. Tap once on the Media Player screen to play the song.



Media Player Screen

2. You can control the song playback as follows:
 - To pause or resume playback, tap once on the screen.
 - To skip to the previous song, swipe left.
 - To skip to the next song, swipe right.
 - To repeat all songs or one song, curve right.
 - To play songs at random, curve left.

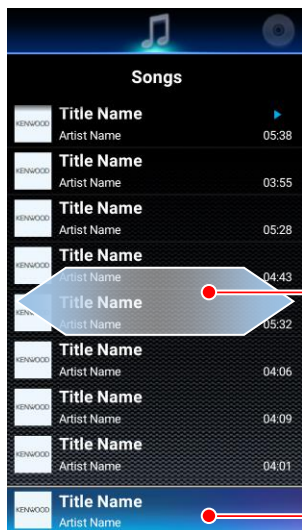
(Refer to page 7 for Gesture Controls)

Category Selection Screens

*** Available on Android version only.*

Songs in your device are automatically sorted into different categories for easy song selection. This list of screens displays the songs in their respective categories.

1. Go to “Menu > Content List” or Swipe up to open the Category Selection screen.



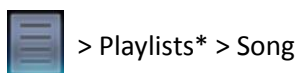
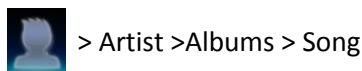
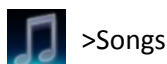
Swipe left or right to go to a different category screen.

Currently playing song
Touch to change to Media Player screen

List Screen

The available categories are: Songs, Albums, Artists, Playlist and Mood.

2. Swipe Left/Right to change categories, and tap on an item to select it. The item hierarchies are listed below:



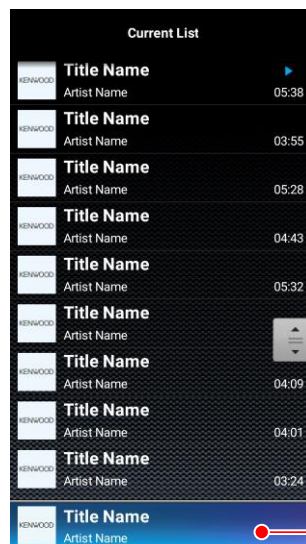
* To play a song in Playlists, create playlist and add your favorite songs. -> See PLAYLIST (page 3)

To return to the Media Player Screen, tap the currently playing song or tap the return key on your device.

Current List Screen

Based on the category used to select the currently playing song, the lineup of all the songs in that chosen category is displayed in the Current List Screen.

1. Swipe down the Media Player screen to open Current List screen.



Currently playing song

Current List Screen

2. Tap a song to play.

To return to the Media Player screen, tap return key on your device.

Making a Playlist

*** Available on Android version only.*

Playlists enables a custom selection of songs for continuous playback based on the individual preference.

1. In the Category Selection Screen, swipe to the Playlist category.
2. Select "Add New Playlist"
3. Enter a new name for this playlist and select OK.

Adding Songs to a Playlist

*** Available on Android version only.*

Songs can be added to the playlist in "Current List Screen" and "Category Selection Screen > Songs".

1. While in any of the 2 screens, long press on a song item.
2. An "Add to Playlist" dialog screen will pop up. Select the appropriate playlist to add the selected song to.

APP LAUNCHER

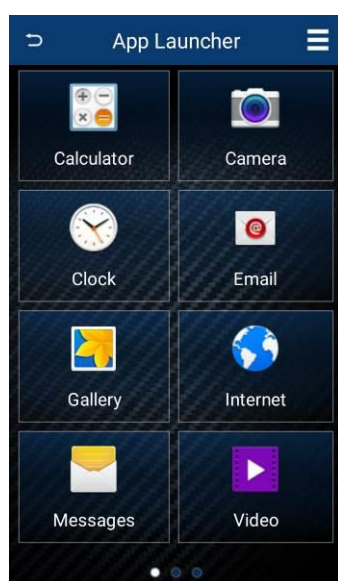
*** Available on Android version only.*

The App Launcher feature allows you to access any 3rd party app using a touch-friendly interface that supports multiple layout patterns.

To access the App Launcher, tap the icon on the top left of the screen.



Tap the icon on the top left of the screen



App Launcher Screen

Adding Apps and Navigation

To add an App to the launcher, tap on the “+” icon in an empty box. A selection screen will allow you to scroll through your apps. Select a contact and tap “ADD”.

The App launcher is able to save up to 24 of your favourite apps for quick access. Simply swipe left and right to navigate between the pages.

CONNECTING THE REMOTE APPLICATION TO THE RECEIVER

The Remote Application is able to connect to a KENWOOD Receiver, and functions like sending remote control commands, receiving data and other useful information from the receiver can be performed.

Android Connectivity

In order to access the Remote Control Mode function, the android device must first be paired with a compatible BT-enabled KENWOOD Car Receiver present within 10m of the Android device. (Visit the KENWOOD website for device compatibility.)

1. Perform a Bluetooth pairing between the Android device and the KENWOOD Car Receiver.
2. Once pairing is successful, prepare the Car Receiver to connect to the Remote Application by going into the setup menu of your respective Car Receiver:

For LCD Display Receivers:

- Enter “Settings”
- Select Remote App
- Select “Select”
- Select “Android”, and select “YES”
- Now select “Android List”
- Look for your mobile device, and press the volume knob. If connection is successful, an Asterisk (*) should appear beside your mobile device.

For Multimedia Receivers:

- Go to Setup
- Select “App Setup”
- In Device Type Selection, select “Android/Other”, and press “Change”
- Select “Bluetooth” and press “Next”
- Select your mobile device, and press “OK”.

3. Launch KENWOOD Remote App on the Android device.

4. Go to “Menu > Connect” to initiate a connection between the app and the receiver.
5. Select the Car Receiver that was paired earlier in the dialog box that pops up.
6. Wait for further instructions to appear on the app screen.
7. The app is now connected to the receiver, and the app enters into Source Control mode.
8. Should you wish to disconnect from the Receiver, Go to “Menu > Disconnect” to disconnect from the Receiver.
9. If you wish to reconnect the application to the Car Receiver, go to Car Receiver’s settings, select Remote APP/Android List. Look for your mobile device and press the volume knob. An asterisk (*) should appear beside your mobile device.

iOS Connectivity

The iOS application is able to connect to the Receiver either via USB connection, or via Bluetooth connection (both connections utilize the iAP protocol by Apple). Please read the following instructions carefully in order to connect to the Car Receiver successfully.

For iOS BT Connection:

1. Perform a Bluetooth pairing between the iOS device and the Car Receiver.
2. Once pairing is successful, prepare the Car Receiver to connect to the Remote Application by going into the setup menu of your respective Car Receiver:

For LCD Display Receivers:

- Enter “Settings”
- Select Remote App
- Select “Select”
- Select “iOS”, and select “YES”

For Multimedia Receivers:

- Go to Setup

- Select “App Setup”
- In Device Type Selection, select “iPod/iPhone”, and press “Change”
- Select “Bluetooth” and press “Next”
- Select your mobile device, and press “OK”.

3. Wait for the iPod BT Source to be made available on the Car Receiver, and switch to iPod BT source.
4. Launch Remote Application on the iOS device.
5. Go to “Menu > Connect” to initiate a connection between the app and the receiver.
6. Wait for further instructions to appear on the app screen.
7. The app is now connected to the receiver, and the app enters into Source Control mode.
8. Should you wish to disconnect from the Receiver, Go to “Menu > Disconnect” to disconnect from the Receiver.
9. If you wish to reconnect the application to the Car Receiver, be sure to go to iPod BT source again beforehand.

For iOS USB Connection:

1. Connect your iOS device to the Car Receiver via USB cable.
2. Prepare the Car Receiver to connect to the Remote Application by going into the setup menu of your respective Car Receiver:

For LCD Display Receivers:

- Enter “Settings”
- Select Remote App
- Select “Select”
- Select “iOS”, and select “YES”

For Multimedia Receivers:

- Go to Setup
- Select “App Setup”

- In Device Type Selection, select “iPod/iPhone”, and press “Change”
- Select “USB 1-Wire” and press “Next”
- Select your mobile device, and press “OK”.

3. Wait for the iPod USB source to be made available on the Car Receiver, and switch to iPod USB Source.

4. Launch Remote Application on the iOS device.

5. Go to “Menu > Connect” to initiate a connection between the app and the receiver.

6. Wait for further instructions to appear on the app screen.

7. The app is now connected to the receiver, and the app enters into Source Control mode.

8. Should you wish to disconnect from the Receiver, Go to “Menu > Disconnect” to disconnect from the Receiver.

9. If you wish to reconnect the application to the Car Receiver, be sure to go to the iPod USB source again beforehand.

iOS App Operation

Due to technical limitations on the iAP protocol that exists on the Car Receiver, please note the following behaviour when operating the iOS Remote Application with the Car Receiver:

- When Remote Application is connected to the Car Receiver via USB, entering Bluetooth source will break the connection between Remote Application and the Car Receiver. In this case, please exit the Bluetooth source, and reconnect the Remote Application.
- When Remote Application is connected to the Car Receiver via Bluetooth, entering USB/iPod-USB source will break the connection between Remote Application and the Car Receiver. In this case, please exit the USB source, and reconnect the Remote Application

SOURCE CONTROL INTERFACE

The Source Control is the main operating interface in Remote Control Mode.

In this interface, you will be able to retrieve and view detailed information from the current source being played in the car receiver, as well as performing basic remote control functions from your device to the car receiver.

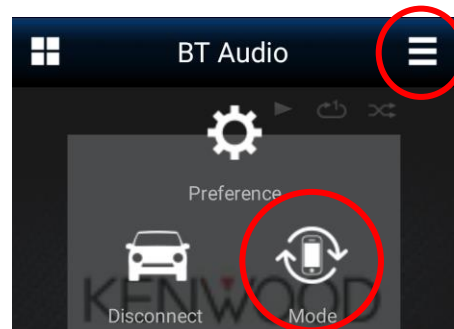
The Source Control interface will launch automatically every time KENWOOD Remote App establishes a connection with a KENWOOD car receiver.

There are 2 modes that the Source Control interface can operate in: Driver Mode and Passenger Mode.

Choosing Source Control Modes

Driver Mode is a gesture-based control mode, while the Passenger Mode is a Button-based control mode. Please choose the appropriate control mode to operate from, as a safety precaution when residing in a vehicle.

1. Select the MENU button on the top right corner of the screen.
2. Select the ‘Mode’ button, to toggle between Driver Mode and Passenger Mode.



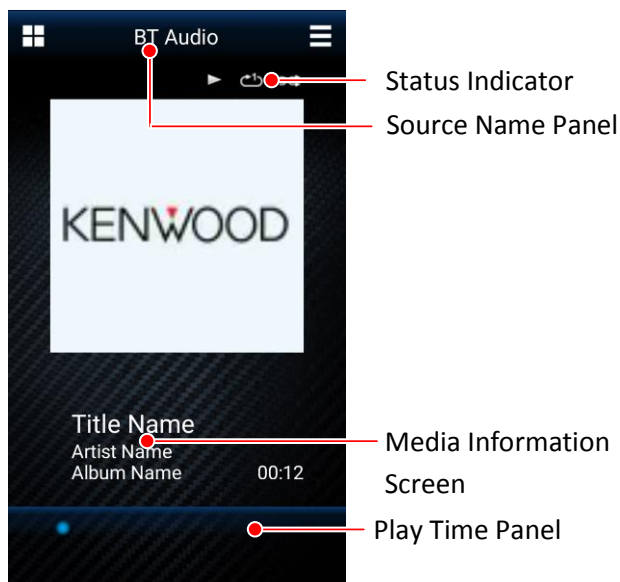
Menu Popup Screen

The following sections provide a detailed description of operating the Application in Driver Mode and Passenger Mode.

DRIVER MODE OPERATION

This mode is operated primarily by Gesture Control, and should be used by the operator of the vehicle. Gesture operations allow the user to operate the Receiver without having to look at the mobile device.*1

Driver Mode Source Control Screen



Source Control Screen

Note

*1 Driver Mode Screen is only available for certain Receiver Models. This feature will not be available for models that do not support this function.

Source Name Screen

The source name panel shows the currently selected source in the connected KENWOOD car receiver. The following table is the list of the sources. (Some sources are only available for certain models.)

Source
CD
Tuner
USB *3
iPod *3
AV Off
Apps Source
Android Source
HDMI/MHL
HD Radio
SXM
Aux-In
ADS
Bluetooth Audio
Standby
Unknown *2

*2 Sources that are not supported natively by the App will show "Unknown".

*3 For sources that have Dual inputs (Like dual USB models), a "Rear" will be appended to the source name, when the 2nd Input is being activated.

Status Indicator

The status indicator shows the playback status. In some Sources, some of these icon options may not be available.

Repeat Indicator

Icon	Repeat Type
Nil	Repeat Off (no icon used)
	Repeat Once
	Repeat Folder/ Group
	Repeat All

Random Indicator

Icon	Random Type
Nil	Random Off (no icon used)
	Random Folder/Group
	Random All

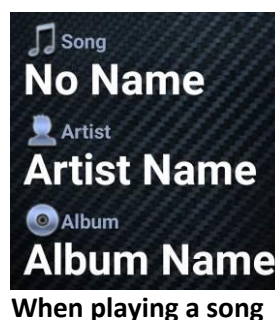
Play/Pause Indicator



Play/Pause indicator shows the current playback status.

Media Information Panel

The media information panel displays some information of a song or a radio station. For example, when the car receiver plays MP3 song with ID3 tag, the song title, artist name and album name are displayed.



When playing a song



When listening to the radio

Play Time Panel

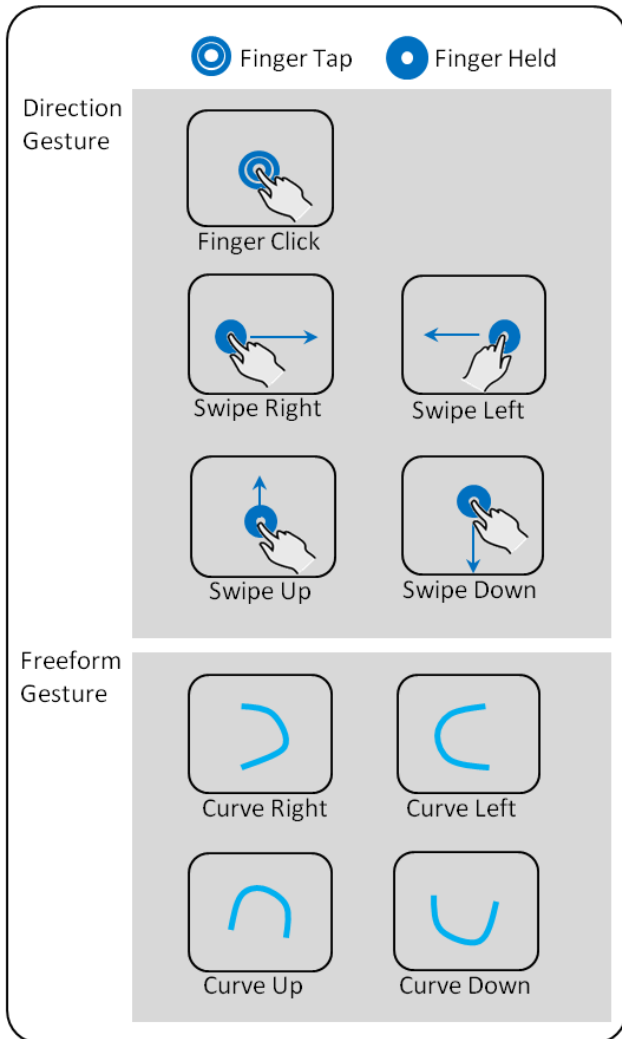
Play Time Bar is only available in BT audio Source.

Gesture Control

Gesture control operation is designed for quick operation control without looking at the smart phone.

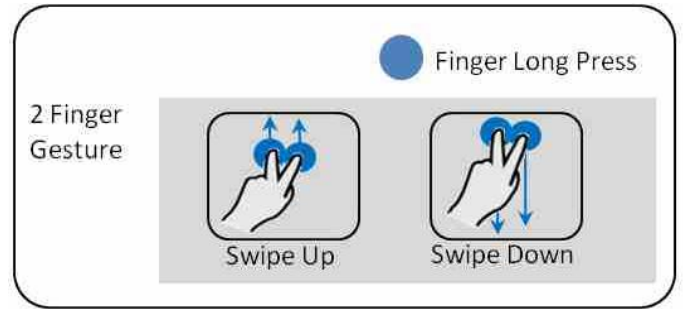
Refer to KENWOOD Remote App internal help (“menu->preference->help”) for more details.

All gesture control patterns in KENWOOD Remote App are showed in the figure below. ^{*4}



Note

^{*4} For freeform gestures, these gestures can be initiated from any direction as long as the final drawn shape is similar to the gestures in the chart.



Gesture Commands in Operation

The same gesture controls performed in different sources will trigger different operations. The mapping of each gesture control to each source is listed in the table below.

Gesture	Remote Control Mode ^{*5}	Media Player Mode
Direction Gesture		
Finger Click	Play/Pause/ Mute	Play/Pause
Long Click	None	None
Swipe Right	Next Song/Right Auto Scan	Next Track
Swipe Left	Previous Song/Left Auto Scan	Previous Track
Swipe Up	Folder Up/Group Up/Up Preset	Load Content List UI
Swipe Down	Folder Down/Group Down/Down Preset	Load Current Playlist UI
Freeform Gesture		
Curve Right	Random Toggle	Random Toggle
Curve Left	Repeat Toggle	Repeat Toggle
Curve Up	Source Change	None
Curve Down	EQ Toggle	Toggle Preset EQ
Multi Point Gesture		
2 Finger Swipe Up	Volume Popup	None
2 Finger Swipe Down	Volume Popup	None

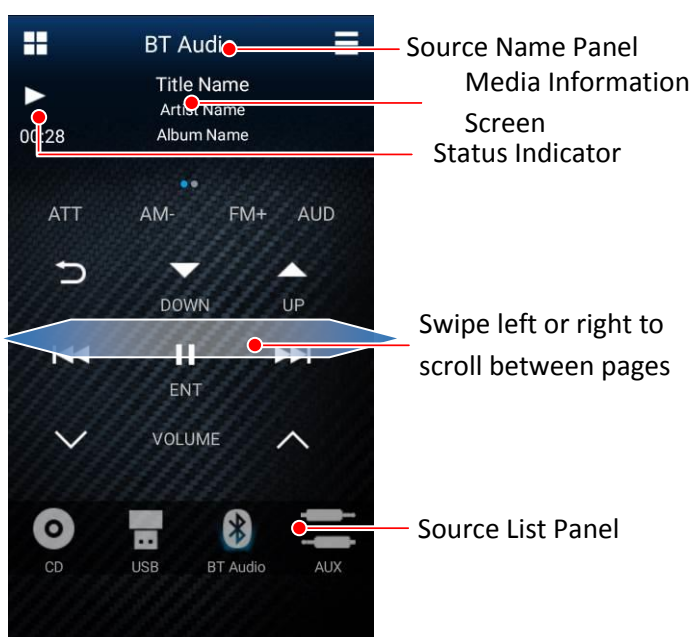
Note

^{*5} In Bluetooth Audio source, control functions depend on phone.

PASSENGER MODE OPERATION

This mode will present to the user a button interface in a similar style as a typical physical remote control. This mode also provides more operation functionalities compared to Driver mode. Because this mode requires the user to look at the mobile device in order to operate the Car Receiver, operators of vehicles are strongly urged not to use Passenger mode while operating the vehicle.

Passenger Mode Source Control Screen



Passenger Mode Screen

Remote Control Button Panel

The Remote Control button panel shows the available buttons for use with the Car Receiver. Depending on the model of your Car receiver, several pages of buttons might be available for use.

To move between button pages, swipe the panel to the left or right.

Source List Panel

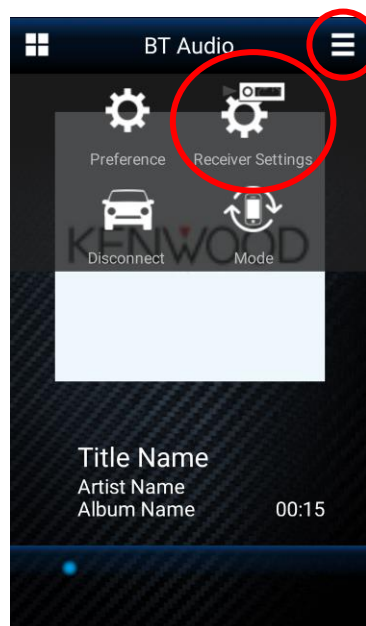
The Source List Panel shows all the current sources available in the Car Receiver. Swipe left or right on the panel itself to see more sources if it is available.

RECEIVER SETTINGS

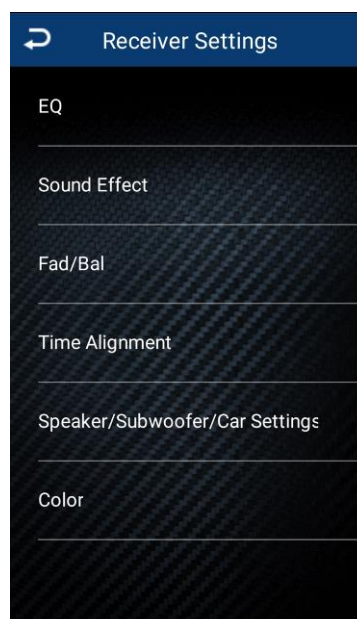
KENWOOD Remote App allows you to adjust certain car receiver settings*⁶ directly from your device. This is done in Remote Control Mode, when the Remote App is connected to the Car Receiver.

Entering Car Receiver Settings

In Source Control interface, tap the MENU button on your device, and select "Receiver Settings".



You will be presented with various receiver setting parameters*⁷ that are available for your Car receiver model.



Receiver Settings Screen

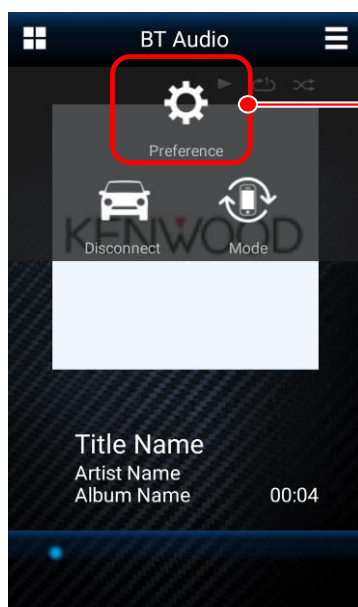
Note

*6 Car receiver settings are only available for certain KWD Models. This feature will not be available for models that do not support this function. For details, please look at the compatible models.

*7 Depending on the Car Receiver Model, certain settings may not be available for adjustment or selection.

OTHER PREFERENCE SETTING

Preference Setting



Preference setting

Menu Screen

Other preference settings can be accessed by pressing the MENU key on the device. Descriptions for various options are provided in the preferences setting screen itself.